

	PETROL 95 ULP	PETROL 93 ULP & LRP	DIESEL 0.05%	DIESEL 0.005%	ILL. PAR.
GAUTENG PUMP PRICE (SA c/l) AS FROM 01/09/2021	1,834.000	1,815.000	-	-	-
WHOLESALE PRICE (SA c/l) AS FROM 01/09/2021	-	-	1,548.980	1,552.380	948.488
SINGLE NATIONAL MAXIMUM RETAIL PRICE	-	-	-	-	1,197.000
BASIC FUEL PRICE - 07/09/2021 (SA c/l)	803.253	792.534	733.310	736.671	728.181
PRESS RELEASE CONTRIBUTION TO BFP 01/09/2021 - 07/09/2021 (SA c/l)	817.110	808.110	746.630	750.030	735.128
UNIT OVER/(UNDER) RECOVERY - 07/09/2021 (SA c/l)	13.857	15.576	13.320	13.359	6.947
AVERAGE BASIC FUEL PRICE 27/08/2021 - 07/09/2021	798.768	786.588	741.577	744.634	735.500
AVERAGE UNIT OVER/(UNDER) RECOVERY 27/08/2021 - 07/09/2021	22.272	25.452	14.053	14.021	5.253

### ANALYSIS MOVEMENT OF AVERAGE OVER/(UNDER) RECOVERY

- MOVEMENT IN INTERNATIONAL PRODUCT PRICES

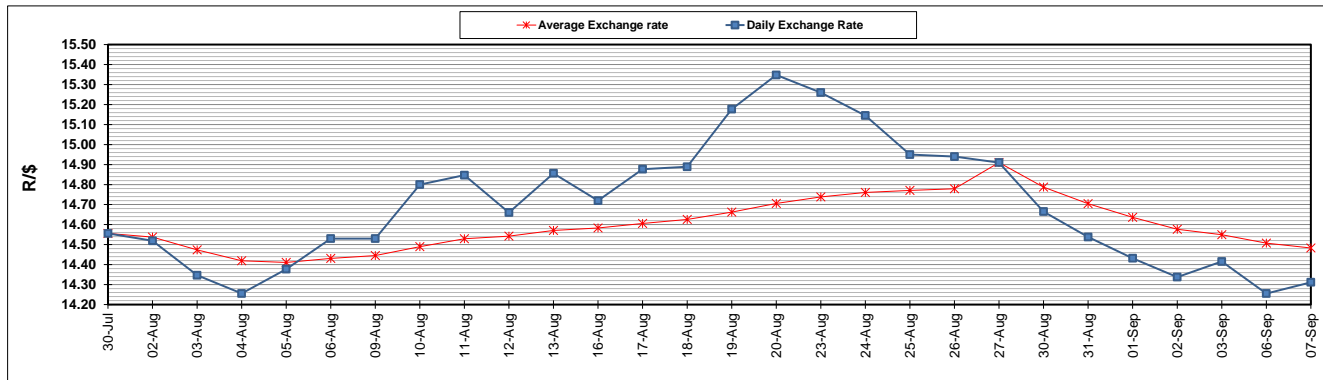
- MOVEMENT IN EXCHANGE RATE

AVERAGE UNIT OVER/(UNDER) RECOVERY 27/08/2021 - 07/09/2021

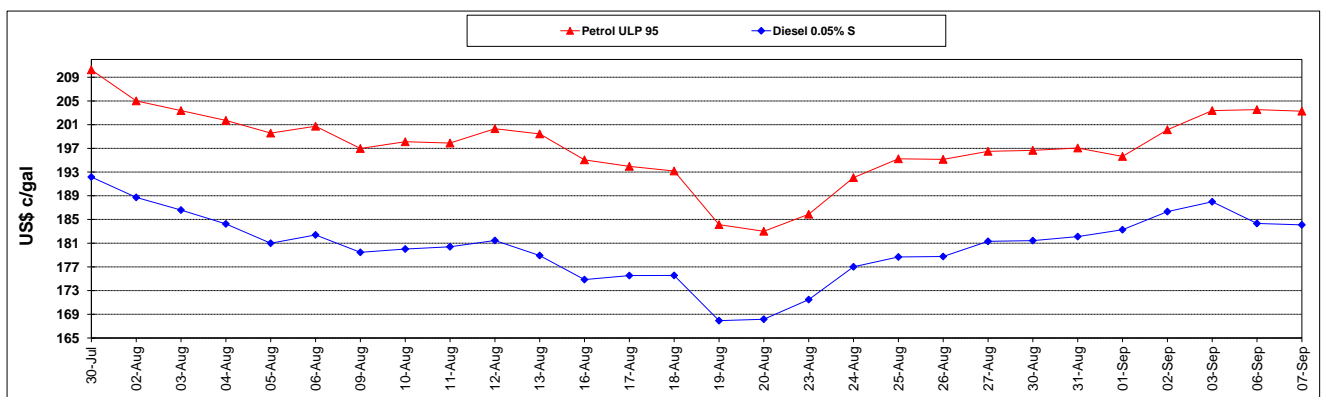
	PETROL 95	PETROL 93	DIESEL 0.05%	DIESEL 0.005%	ILL. PAR.
	5.941	9.370	(1.108)	(1.203)	(9.784)
	16.331	16.082	15.161	15.224	15.037
	22.272	25.452	14.053	14.021	5.253

**R/\$ EXCHANGE RATE - (R/\$14.3115 - 07/09/2021)**

### EXCHANGE RATE USED IN BASIC FUEL PRICE



### INTERNATIONAL PRODUCT PRICES OF BASKET USED IN BASIC FUEL PRICE



### BASIC FUEL PRICE IN SA CENTS PER LITRE

